

Hospitality Interiors

INTERIOR DESIGN FOR HOTELS, RESTAURANTS, BARS & CLUBS

Issue 78 | July - August 2018

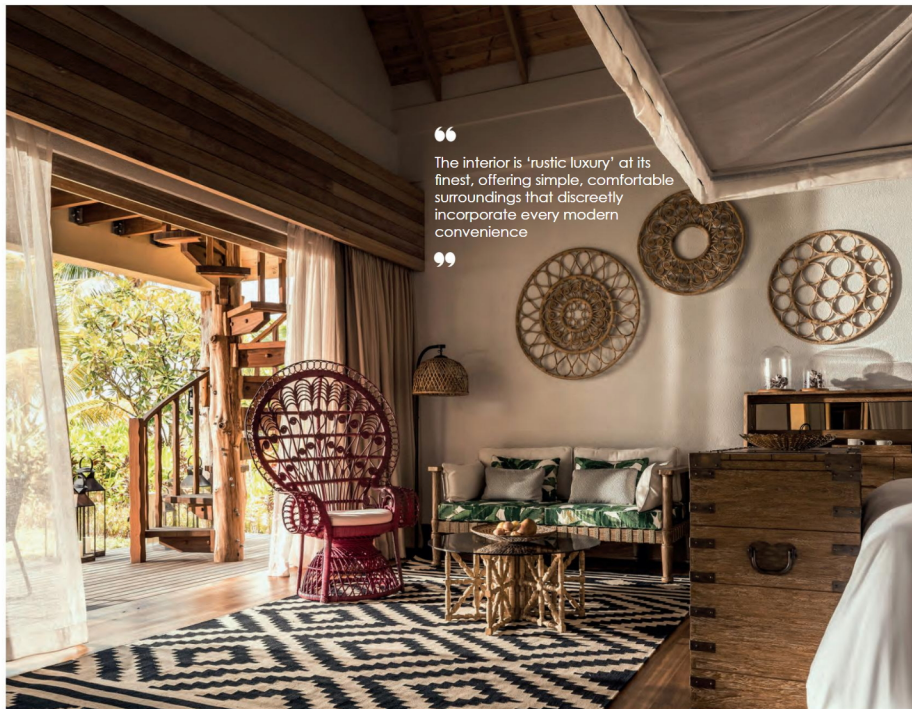


Brintons - breathtaking carpets, engineered to last

Four Seasons Resort Seychelles at Desroches Island

Seychelles

In March this year, Desroches Island welcomed its first resort – a luxurious Four Seasons property that fully embraces the tranquility of this remote coral island.



“

The interior is 'rustic luxury' at its finest, offering simple, comfortable surroundings that discreetly incorporate every modern convenience

”

Four Seasons' new resort on Desroches Island provides the perfect complement to its existing property on the Seychelles mainland. Just a 35-minute flight southwest of Mahe, this 933-acre coral island is awash with lush vegetation and edged by 14km of pristine beaches.

With eco id at the helm of its architecture and interior design, the resort has been carefully constructed with the utmost respect to its beautiful surroundings.

There are 71 beachfront residences on offer, ranging from romantic bungalows tucked away amongst the palm trees to a seven-bed presidential villa with three swimming pools and expansive living and dining spaces.

Each epitomises the carefree island lifestyle, inviting guests to live barefoot from arrival to departure, with indoor-outdoor spaces, sand at the doorstep and vintage decorative touches.

The interior is 'rustic luxury' at its finest, offering simple, comfortable surroundings that discreetly incorporate every modern convenience.

A warm colour palette of exposed woods, wicker furnishings, raw linens and woven rugs is complemented by custom-designed furniture from eco id and stylish pieces from Gervasoni, Kettal and Restoration Hardware.

The resort's restaurants mirror the indoor-outdoor styling of the accommodation, featuring refined interiors that complement rather than overwhelm the surrounding scenery.

The Lighthouse is a beachfront restaurant situated on the southern tip of Desroches Island. Set within a bright white lighthouse silhouetted against the ocean, the venue features a dramatic raised circular terrace with 180 degree views of the Indian Ocean and a fireplace in the centre to provide natural lighting and atmosphere.



Claudine, meanwhile, is a chic poolside restaurant inspired by the Mediterranean Riviera. Open brick and terrazzo flooring is combined with exposed wooden roofing in the indoor dining area, while the generous outdoor seating area allows diners to soak up views of the pool and enjoy the island's warm climate.

Elsewhere, the resort's Circle of Connection Spa captures the untouched beauty and tranquility of the island to create a setting that feels naturally rejuvenating.

www.ecoid.com



Make them feel home
when away from home..

Warisan
INDOOR | OUTDOOR | CUSTOM
www.warisan.com

Warisan – creating hospitality and residential furniture since 1989

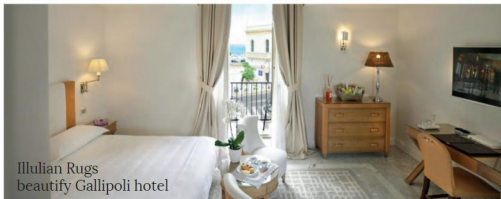


Over the last 30 years, Warisan has been manufacturing high quality furniture for international hotels and resorts. Whilst being able to fulfil large contract furniture orders, Warisan stays flexible enough to supply smaller and specialised orders. The company also supplies fine residential furniture for the private sector.

Only using sustainable plantation hardwoods, cultivated seashells and highly renewable resources such as bamboo, Warisan takes an ethical approach to its work and impact. Due to the company's fully controlled and integrated in-house factory process – from log selection, components preparation, finishing and upholstery to quality control –

each product comes with a warranty.

For interior designers, Warisan is glad to work either according to their custom expectations, or offer from its extensive range of furnishings which features numerous styles – from neo colonial to minimal, rustic to contemporary – for interior and outdoor use. www.warisan.com



Illulian Rugs beautify Gallipoli hotel

High-end designs from Illulian Rugs now embellish the interiors of Palazzo del Corso, a luxurious new boutique hotel in Gallipoli.

The Amalfi and Saint Barth designs from Illulian Rugs' Marine Collection, alongside Ecstasy and Oracle from the Design Collection, provide the perfect match for this elegant 19th century property.

Within the suite rooms, the sophisticated

design of the Oracle rug is softened by a neutral and delicate color palette, while the Ecstasy model creates an intriguing optical effect within the hotel's public spaces.

The Saint Barth and Amalfi rugs create a sophisticated feel; the lively colour of the red coral standing out from the mélange background.

All Illulian's designs from the Marine

Collection and Design Collection are knotted and carded by hand and can be produced in two quality levels – Platinum 120 and Gold 100. Platinum 120, the most exclusive line, is characterised by the use of top quality wool and silk and an extremely complex handcrafted process – with 180,000 knots/m² – that creates highly scenographic sculpted effects. www.illulian.com